

Medical Models Catalogue



00966568654916

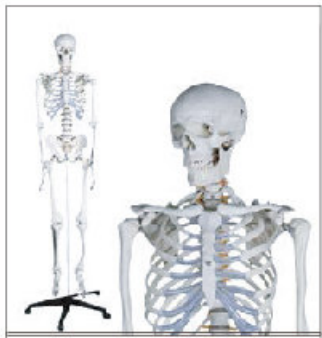


www.LegendaryADLAND.com

Some Of Our Partners

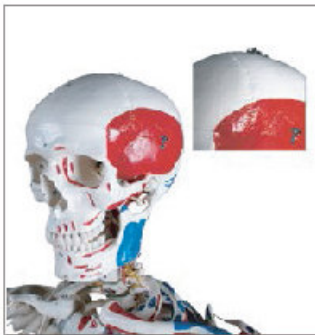


Medical Training Models



◀ YA/L011 Human Skeleton Model 180cm Tall

This model is a replica of a life size human skeleton and shows all the skeleton parts in high details. It's hand-assembled to provide intricate details and long-lasting durability. The main joints are articulated; the upper and lower limbs can be removed easily. Calvarium, Jaw, Legs, Skull, Arms, Feet are detachable. 180cm tall with free colored poster.



◀ YA/L011B Human Skeleton Model with Hand Painted Muscles and Detailed Numbers 180cm Tall

This model is a replica of a life size human skeleton and shows all the skeleton parts in high details. It's hand-assembled to provide intricate details and long-lasting durability. The main joints are articulated; the upper and lower limbs can be removed easily. Calvarium, Jaw, Legs, Skull, Arms, Feet are detachable. The left side of the skeleton shows the points of origin (red) and the points of insertion (blue) of the muscles. 180cm tall with free colored poster.



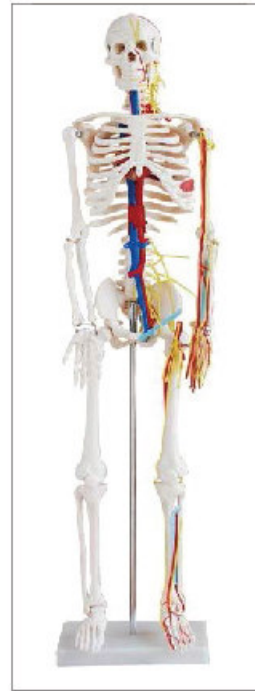
▲
YA/L012 Human Skeleton Model 85cm Tall

This half-size skeleton contains 200 bones of an adult human. The main joints are articulated; the upper and lower limbs can be removed easily. Skull and legs are detachable.
Size: 85CM.



▲
YA/L012A Human Skeleton with Spinal Nerves 85cm Tall

This model features spinal column, nerve roots, vertebral artery, a herniated disc, cartilage highlighted in green, removable 3-piece skull and extremities.
Size:85CM.



▲
YA/L012B Human Skeleton with Heart and Blood Vessels 85cm Tall

This model depicts the position, course and distribution of main vessel and peripheral nerves of the human body.
Size: 85CM



▲
YA/L012C Human Skeleton Model with Hand Painted Muscles 85cm Tall

The left side of the skeleton shows the points of origin (red) and the points of insertion (blue) of the muscles.
Size:85cm



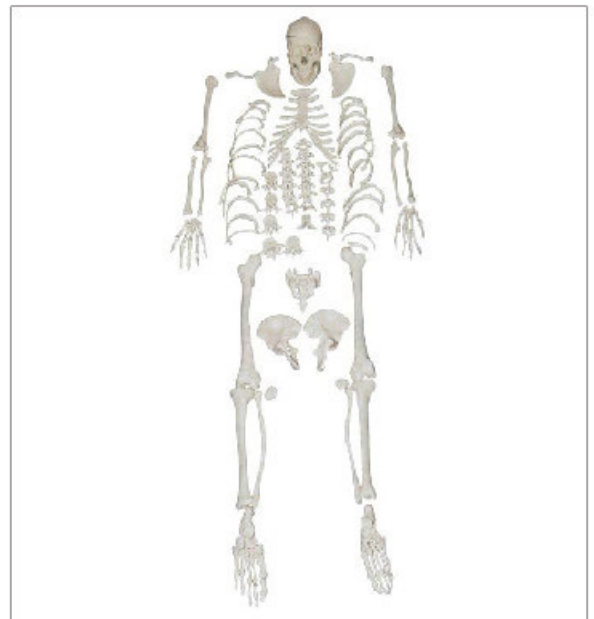
▲
YA/L014 Fetus Skeleton Model

The model shows a fetus structure. 38cm tall.



▲
YA/L015 Human Skeleton Model 45cm Tall

This miniature skeleton model features a movable jaw on springs, removable calvarium, arms and legs.
Size: 45CM.



▲
YA/L016 Disarticulated Skeleton with Skull

Comes with a 3-piece skull (calvarium cut) and a spring-held jaw. Bones of the vertebral column are strung in anatomical order on nylon filament. The bones of one hand and one foot are loose. The other hand and foot are articulated with wire. The sternum is cast in 1 piece and is complete with ribs. With simulated intervertebral discs. All other bones are loose. Life size.



▲ YA/L021 Human Skull Model

Full dentition, spring-held lower jaw, and calvarium cut. Nature size.



▲ YA/L022 Fetus Skull Model

Life-size representation of a human fetal skull at week 30 of development. Moveable spring-held jaw. Nature size.



▲ YA/L021D Human Skull with Colored and Painted Muscle

Life-size replica of an adult human skull in 3 parts with cut calvarium and removable mandible. The left side has painted representations of the points of origin (red) and insertion (blue) of the muscles. Nature size.



◀ YA/L023 Human Skull with Osteal Separation

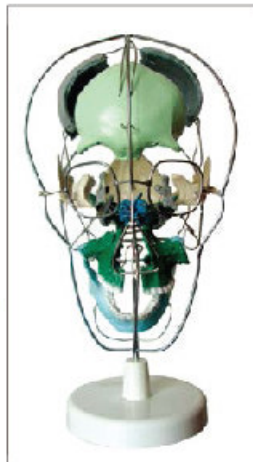
The Beauchene Skull is mounted on a chrome upright attached to a base. The skull can be tilted and locked in place for viewing the ventral aspect of the facial bones. Includes identification booklet.

Size:30*24*43cm

▶ YA/L023A Colored Human Skull with Osteal Separation

The Beauchene Skull is mounted on a chrome upright attached to a base. The skull can be tilted and locked in place for viewing the ventral aspect of the facial bones. Includes identification booklet.

Size:30*24*43cm



▲ YA/L021F Human Colored Skull

Plastic. With the skull depicted in different colors, this life-sized model is a useful tool for studying the correct position and the relationship of all structures. Remove the skullcap to see internal details; you can also remove the articulated mandible. Nature size.



▲ YA/L026 Human fossil Models

- 1: Age: Lower Pleistocene, approx. 1.7 million years. Separates into 2 parts.
- 2: Age: Lower Pliocene, approx. 2.5 - 3.0 mill. years. Set of teeth and lower jaw have been reconstructed with the aid of other original finds of "member 4" of Sterkfontein. Separates into 2 parts.
- 3: Age: 3.6 - 3.0 million years, Upper Pliocene. Detachable in 2 parts.
- 4: Age: Lower Pleistocene, less than 1.9 million years. Separates into 2 parts.
- 5: Age: middle Upper Pleistocene (Wuerm glacial), approx. 40,000 - 70,000 years old. The upper dental arcade and the lower jaw have been reconstructed and adapted after the original find in Le Moustier (Dordogne, France) in the year 1908. The estimated age of this find is also 40,000 - 70,000 years. Separates into 2 parts.
- 6: Age: Top Upper Pleistocene, approx. 25,000 years. Separates into 2 parts.



▲ YA/L025 Human Skull Model 14 parts.

This model has 14 parts. Nature size.



▲ YA/L025A Human Colored Skull Model 14 parts

Based on YA/L025, but with color. Nature size.



▲ YA/L024 Human Skull Model 10 parts

The model has 10 parts. Nature size.



▲ **YA/L034 Osteoporosis Model**

Consist of 3 medially divided lumbar vertebrae with intervertebral discs. The upper section shows healthy bone structure, the middle section shows osteoporotic bone structure and the lower section shows advanced osteoporotic bone structure with flattened plates, deformation and decreased mass.

Size:7.2cm.



▲ **YA/L034A Osteoporosis Model 3 Parts**

Size:3cm.



▲ **YA/L031 Lumbosacral Vertebrae and Nerves Model**

Consists of 5 lumbar vertebrae with intervertebral discs, lumbar nerves, and spinal cord. The sacral crest is removable to show the sacral segment of the spinal cord and associated nerve branches. Nature size.



▲ **YA/L036 Occipital Spine Model with Pelvis and Femur Head**

Life size. Fully flexible vertebral column with intervertebral discs. Includes occipital plate, sacrum, coccyx, complete pelvis with symphysis, and removable femur heads. Vertebral arteries and spinal nerve branches are also represented. Nature size.



▲ **YA/L032 Cervical Vertebral Column with Neck Artery**

Consist of occipital plate, 7 cervical vertebrae with intervertebral discs, cervical nerves, vertebral arteries and spinal cord. On stand. Nature size.



▲ **YA/L033 Thoracic Vertebra and Spinal Nerves Model**

Consists of 12 thoracic vertebrae with intervertebral discs, thoracic nerves, and spinal cord. Nature size.



▲ **YA/L037 Occipital Spine Model with Pelvis**

This fully flexible, life-sized vertebral column displays the occipital plate; cervical, thoracic, and lumbar vertebrae; sacrum; coccyx; and complete pelvis. Nature size.



▲ **YA/L036A Painted Muscled Occipital Spine Model with Pelvis and Femur Head**

Life size. Fully flexible vertebral column with intervertebral discs. Includes occipital plate, sacrum, coccyx, complete pelvis with symphysis, and removable femur heads. Vertebral arteries and spinal nerve branches are also represented. The left side has painted representations of the points of origin (red) and insertion (blue) of the muscles. Nature size.



▲ **YA/L037F Colored Occipital Spine Model with Pelvis**

This fully flexible, life-sized vertebral column displays the occipital plate; cervical, thoracic, and lumbar vertebrae; sacrum; coccyx; and complete pelvis. Vertebral arteries, and spinal nerves are also shown. The regions of the vertebral column are color coded for easy identification. Nature size.



YA/L041 Shoulder Joint

This model of a flexible shoulder joint with ligaments is life size. It includes the scapula, clavicle, and upper part of the humerus.

Size: 17*17*16cm



YA/L042 Elbow Joint

This single-piece life-sized model is a realistic representation of the human elbow with ligaments.

Size: 12*8*20cm



YA/L043 Hand Joint

Demonstrate all the hand functionality and the external anatomical structures. Include flexible, artificial ligaments.

Size: 13*8*26cm



YA/L044 Hip Joint

Demonstrate abduction, anteversion, retroversion, and internal / external rotation. Include flexible, artificial ligaments.

Size: 17.5*15*20cm



YA/L045 Knee Joint

Representing a functional knee joint, this life-sized model includes the lateral and patellar ligaments and meniscus.

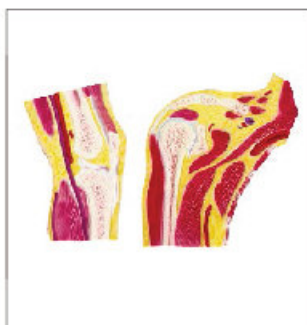
Size: 12*12*32cm.



YA/L046 Foot Joint

Cast from natural specimen. With base of tibia. Rigi mounting.

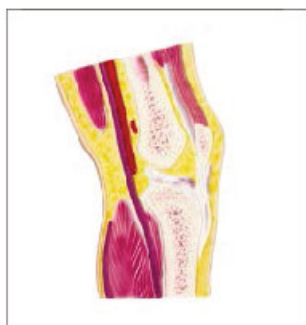
Size: 20*7*26cm.



YA/L041A Sectional Shoulder Joint Model

23 positions are displayed.

Size: Life size G.W.: 0.5kg



YA/L042A Sectional Elbow Joint Model

14 positions are displayed.

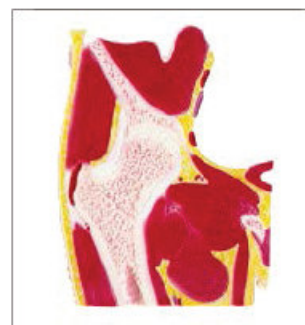
Size: Life size G.W.: 0.5kg



YA/L043A Sectional Hand Joint Model

29 positions are displayed.

Size: Life size G.W.: 0.7kg



YA/L044A Sectional Hip Joint Model

24 positions are displayed.

Size: Life size G.W.: 0.7kg



YA/L041B Mini Shoulder Joint with Cross Section

The mini shoulder joint model has been reduced to a half of the natural size but has kept all of the functionality of larger shoulder joint models. In addition to the external anatomical structures of the shoulder joint, using the superb new shoulder joint cross-section mounted on the base, the medical or teaching professional now has the possibility to explain what is happening from "within" the shoulder joint.



YA/L044B Mini Hip Joint with Cross Section

The mini hip joint model has been reduced to a half of natural size but has kept all of the functionality of larger hip joint models. In addition to the external anatomical structures, the hip joint cross-section mounted on the base, the medical or teaching professional now has the possibility to explain what is happening from "within" the hip joint. This mini hip joint is a great way to study the anatomy of the human body.



YA/L045B Mini Knee Joint with Cross Section

The mini knee joint has been reduced to a half of the natural size of a human knee but has kept all of the functionality of the larger kneejoint models. In addition to the external anatomical structures of the knee, using the superb new knee joint cross-section mounted on the base, the medical or teaching professional now has the possibility to explain what is happening from "within" the knee joint .



YA/L041F Muscled Shoulder Joint Model



YA/L044F Muscled Hip Joint Model



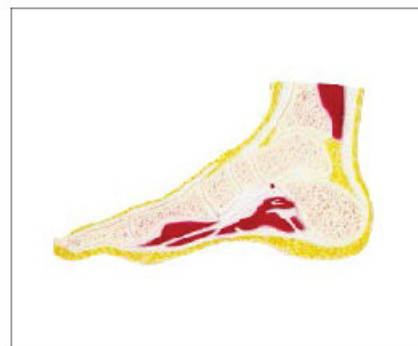
YA/L045F Muscled Knee Joint Model



YA/L045A Sectional Knee Joint

17 positions are displayed.

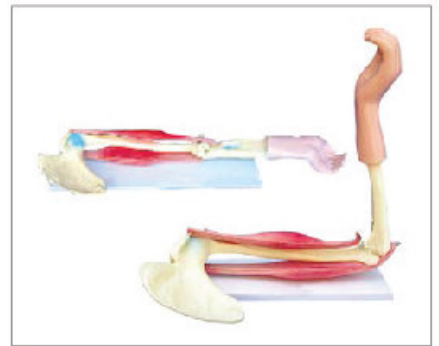
Size: Life size G.W.:0.7kg



YA/L046A Sectional Foot Joint

8 positions are displayed.

Size: Life size G.W.:0.7kg



YA/L042C Elbow Joint with Muscle

Size:70*18*9cm



▲ YA/L051 Male Pelvis

The size of this model is just the same as the realities and made of PVC plastic.

It shows the following:

Pelvis shapes: Long and narrow

Pelvis cava: Like a funnel

Aperture pelvis superior: Heart-like

Sacrum: Long and narrow with great flexibility

Angles of pelvis arch: 70-75 degree

Symphysis pubica: Long and narrow

Size: 26.5*20*19cm.



▲ YA/L052 Female Pelvis

The size of this model is just the same as the realities and made of PVC plastic. It shows the following:

Pelvis shapes: Short and broad

Pelvis cava: Like a barrel

Aperture pelvis superior: Rounded

Sacrum: Broad and short with little flexibility

Angles of pelvis arch: 90-100 degree

Symphysis pubica: Short and broad.

Size: 26.5*17.5*17cm.



▲ YA/L071 Bone Structure Model

It shows the femur's external and internal structures, including the periosteum, blood vessels, spongy bone, compact bone, and Haversian system.

Size: 40*42*30cm.



▲ YA/L054 Pelvis with 5pcs Lumbar Vertebrae

Articulated. Complete with 1st to 5th lumbar vertebrae, sacrum, and coccyx. Life size.



▲ YA/L055 Pelvis with 5pcs Lumbar Vertebrae and Femur Head

Articulated. Complete with 1st to 5th lumbar vertebrae, sacrum, coccyx and femur heads. Life size.



▲ YA/L053 Pelvis with 2pcs Lumbar Vertebrae

Articulated. Complete with 4th and 5th lumbar vertebrae, sacrum, and coccyx.

Size: 26.5*17.8*17.5cm.



▲ YA/L061 Upper Extremity Model

Articulated. With scapula. Nature size.



▲ YA/L062 Lower Extremity Model

Life-size replica of an adult human skeletal leg with the hip joint. Nature size.



YA/L101 Life Size Whole Body Muscle Model

30 parts.

Size:66*37*173cm.



YA/L102 Life Size Whole Body Muscle Model with Inner Organs 29 Parts

29 parts with inner organs.

Size:66*37*175cm.



YA/L103 Life Size Whole Body Muscled Model 79 Parts

79 parts with inner organs. Half body is smooth and the other half one is showing muscular system.

Size: 50*24*173cm



YA/L104 85CM Tall Whole Body Muscled Model 27 Parts

27 parts with inner organs can be detached. Whole body is muscular with a stand on the base.

Size: 87*33*30cm



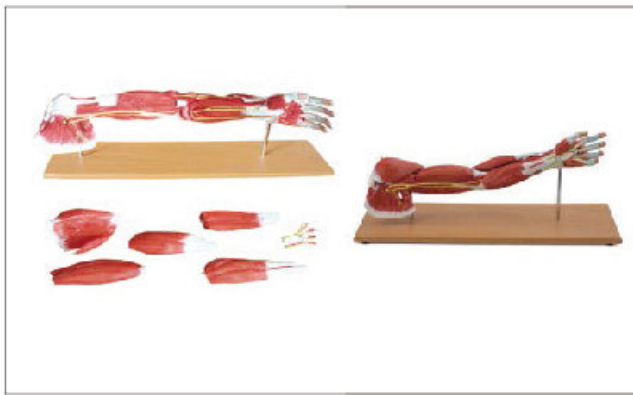
YA/106 50CM Tall Whole Body Muscled Model

Size:25*17*52cm



YA/L107 Human Muscled Model 22cm Tall

This model is only 22cm tall for students to learn the human muscled body.



YAL113 Muscles of the Human Arm 7 Parts

The model shows, in great detail, the anatomical structure of the arm, complete with superficial and deeper muscles, vascular structures, nerves and ligaments.

Size:20*13*76cm.



YAL123 Muscles of the Human Leg 13parts

The model shows, in great detail, the anatomical structure of the leg, complete with superficial and deeper muscles, vascular structures, nerves and ligaments.

Size:17*17*110cm.



YAL124 Muscle Fixed, Moving Point and Dynamic Model

The model shows leg muscles fixed, moving point and dynamic.

Size:15*17*96cm.



YAL126 Normal and Abnormal Feet, set of 3

3 life size models representing normal, flat and arched feet.

Size:21*14.5*31.5cm



YAL127 Plantar Muscle Feet

This life size model is composed of 4 parts. The plantar aponeurosis and the flexor brevis can be removed to show the underlying network of muscles, tendons, vessels and nerves. A deeper plantar dissection allows observation of the plantar muscles and plantar nerve branches. A superficial dorsal dissection shows ligaments, nerves and vessels.

Size:23*8*12cm



YAL114 Muscles of the Arm 2 Parts

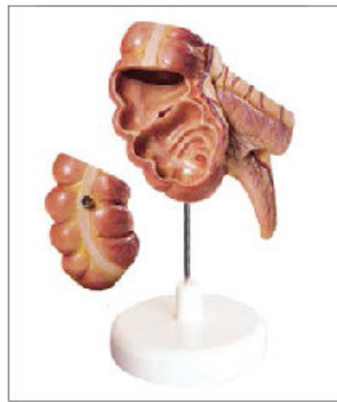
The model illustrates the muscles of the arm in the relaxed and contracted states. Muscles and tendons are shown in great detail.



▶ **YA/D011 Digestive System Model 3 Parts**

This life size model shows the human digestive tract from mouth cavity to rectum. The oral cavity, the pharynx and the first part of the esophagus are dissected along the sagittal plane. The liver is shown together with the gall bladder and the pancreas is dissected to expose internal features. The stomach is open along the frontal plane; the duodenum, caecum, part of the small intestine and the rectum are open to expose the interior. The transverse colon is removable. An additional relief model of the head shows the anatomy of the mouth with salivary glands.

Size:90*32*14cm.



▶ **YA/D014A Appendix and Caecum Model**

The model shows the open caecum with appendix. ileum, ileocaecal orifice and valve. Nature size.



▶ **YA/D015A Enlarged Rectum Model**

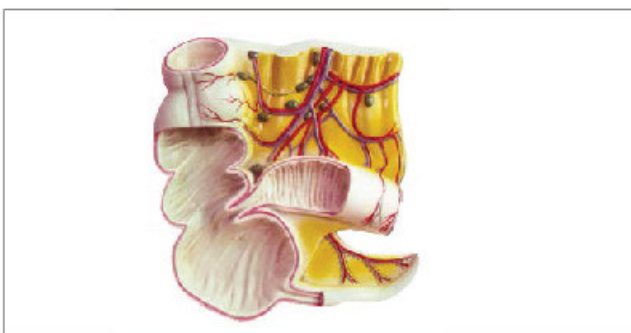
It shows the structure of rectum and anus section. Enlarged.



▶ **YA/D013 Diseased Digestive System Model**



▶ **YA/D015B Rectum Cancer Model**



▶ **YA/D014 Appendix and Caecum Model**

The model shows the open caecum with appendix. ileum, ileocaecal orifice and valve. Blood vessels and lymph nodes are also represented.

Size:33*23*8cm



▶ **YA/D021 Stomach Model 2 Parts**

This model is dissected along the medial plane and can be opened to show the internal structure of the stomach, including the mucosa, the pylorus and a section of the gastric wall. Superficial dissections expose the longitudinal, circular and oblique muscle layers, with nerves and vascular structures.

Size:13*10*23cm



YA/D021A Stomach Model 2 Parts

This model is dissected along the medial plane and can be opened to show the internal structure of the stomach, including the mucosa, the pylorus, a section of the gastric wall. The model also shows the superficial muscular layers and the blood vessels.

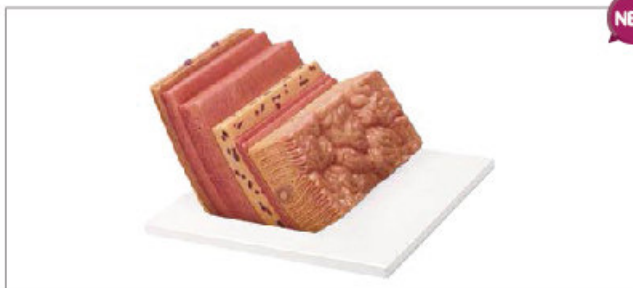
Size:11*13*18cm.



YA/D022 Structure Of Stomach Wall

This one-piece model, 150X life size, is an important tool to study the histology of the most important organ of the digestive system: the stomach. All the different layers from the epithelium to the serous coat are represented with great accuracy and detail.

Size:30*20*28cm



YA/D022A Stomach Wall Model

Demonstrated in transverse and vertical section. It shows the structure of layers of the stomach wall. 10 positions are displayed.

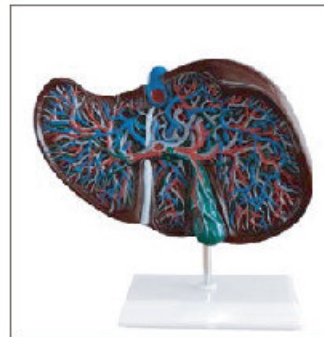
Size: 13 *19 * 17cm.



YA/D031 Liver Model

The model reproduces a life size liver with the gall bladder. The hilus vessels are shown as well as the extrahepatic ducts and the main ligaments.

Size:17.5*11*18cm.



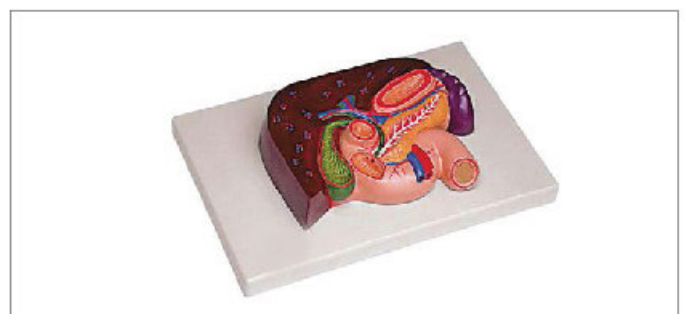
YA/D031A Liver Section with Gallbladder

The model shows the liver and gallbladder in open section with the complex network of vessels and bile ducts, displayed in different colors for clarity and ease of examination.

Size:15*17*26cm.



YA/D031B Hepatolith Model



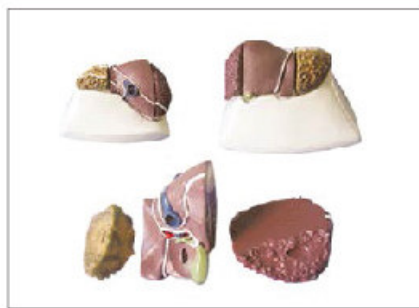
YA/D032 Liver with Gallbladder, Pancreas and Duodenum

This life size model shows a section of the liver with gall bladder,pancreas and duodenum, hepatic and pancreatic ducts.

Size:25*28*6.5cm.



▲ **YA/D035 Diseased Liver Cancer Model 1**



▲ **YA/D035A Diseased Liver Cancer Model 2**



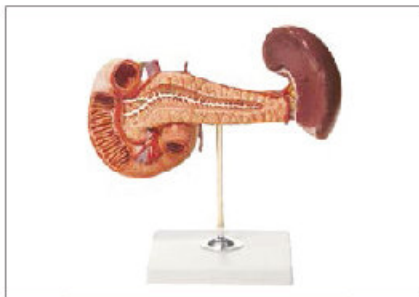
▲ **YA/D035B Diseased Liver Cancer Model 3**



▲ **YA/D033 Liver, Pancreas and Duodenum**

This model shows the liver, spleen, blood vessels and pancreas. External structures are illustrated as well as the pancreatic duct of the pancreas. Also shows the abdominal aorta and inferior vena cava. Dissectible into 3 parts.

Size:23x12.5x26.5CM.



▲ **YA/D034 Pancreas, Duodenum and Spleen**

The model is an accurate representation of the pancreas, spleen and duodenum. The pancreas is open to show the entire pancreatic duct. The duodenum is partially dissected to expose its internal structure.

Size:12*19*27cm.



▲ **YA/D041 Head Section Model**

Life size representation of the superficial and the internal structure of the head and neck. This relief models shows all relevant structures of the human head in great detail.

Size:33*23*5.5cm.



▲ **YA/D045 Nose, Mouth and Throat Cavity Model**

This model shows the structure of nose, mouth and throat. Totally 11parts.

Size:36*30*23cm.



▲ **YA/D051 Molar Teeth**

Size:11*8*28.5cm



▲ **YA/D081 Phantom Head Simulator**

The model is a lightweight and compact economy type simulator. The upper jaw model is fixed with a screw located in the head base, and the lower jaw model is fixed to the lower plate of MANIKIN at an open position. It is possible to perform various types of training effectively by using this dental MANIKIN along with a wide variety of jaw models and optional items such as Oral Cavity Cover. It can be easily installed in clinics and at home, so you can use it anytime you want.



▲ **YA/D082 Dental Simulation Training System**

Dental Simulation Practice System
Unit box with instrument hanging arm:

Standard accessories:

Electric Movable simulated therapy machine
Advance imitation head model Patient simulator,
cranium with jaws, tooth model, face mask,
pneumatic patient positioning system.

High speed handpiece tube

Low speed handpiece tube

3-way syringe

Water purification system

suction system

Foot switch

Mobile unit for manikin complete

Dentist's side instrument tray with movement control panel.

Phantom head with mannequin body and

pneumatic piston for movements of the body

upright to flat, all the movements like tilting,

rotation of head, high quality ball and socket neck

joint for all the movements. TMJ movements, even

provision to fix TMJ in open position. Heavy duty

phantom head with excellent quality face mask,

total closed oral cavity, drain nipple for the drain

water.

Packing:97*74*98cm 95kg



▲ **YA/D052 Caries Resolve Model**

Size:6*4.5*11cm



▲ **YA/D054 Dental Pulp Disease Model**

Size:6*4.5*11cm



▲ **YA/D055 Enlarged Baby Teeth**

Size:11*9*9cm



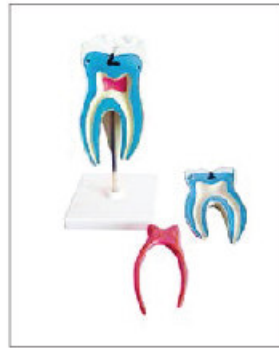
▲ **YA/D052A Diseased Right Inferior Buccal Teeth with Radicular Caries Lesion**

The model is an accurate representation of the pancreas, spleen and duodenum. The pancreas is open to show the entire pancreatic duct. The duodenum is partially dissected to expose its internal structure.
Size:12*19*27cm.



▲ **YA/D056 Enlarged Adult (Permanent) Teeth**

Size:13*11*11cm



▲ **YA/D057 Molar Teeth with Caries 3 Parts**



▲ **YA/D053 Diseased Tooth Model**

Size:6*4.5*11cm



▲ **YA/D053A Diseased Tooth Model**

Size:6*4.5*11cm



▲ **UN/K1 Dental Care Model**

The models is 5 times enlarged. It is used for the training of tooth brushing, dental care etc.



▲ **UN/K2 Dental Care model**

This model is about 2 times enlarged.



▲ **UN/K3 Advanced Dental Care Model**

The model is about 5 times enlarged with 32 pcs teeth.



▲ **UN/K4 Dental Care Model with Cheek**

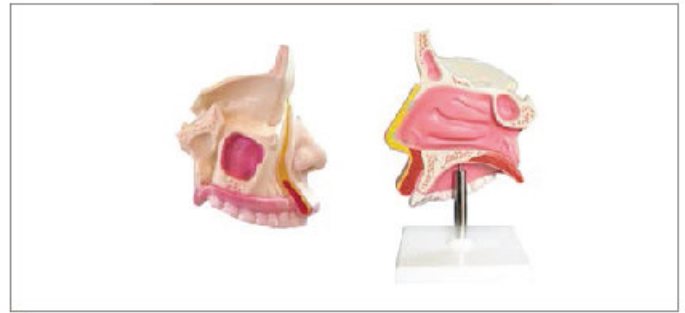
This model is nature size. It is with cheek and lifelike.



YA/R011 Respiratory System Model

A life size reproduction of the complete human respiratory system. It is composed of 7 parts showing the larynx (dissected along the sagittal plane), the lungs (dissected along the frontal plane) and a 2-part heart.

Size:40*26*12cm.



YA/R021 Nasal Cavity 1 Part

This life size model shows a section of the nasal cavity.

Size:11*13*20cm.



YA/R012 Respiratory System Model

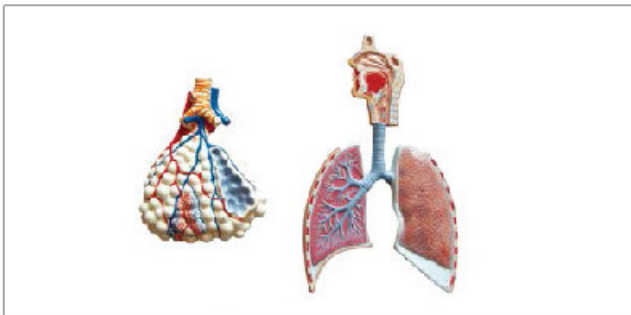
This model shows mini and simple respiratory system of human.



YA/R021A Nasal Cavity 1 Part With Card

This life size model shows a section of the nasal cavity.

Size:11*13*20cm.



YA/R013 Respiratory System and Alveolus Model

A relief model of the respiratory system, including the oronasal cavity, larynx and trachea, primary bronchi and bronchial tree. The upper respiratory tract is sectioned along the medial sagittal plane. An alveolus with blood vessels (about 150X life size) is shown with excellent internal detail.

Size:40*26*8cm.



YA/R021B Nasal Cavity 2 Parts

The model shows a medial section of the nasal cavity. The nasal septum and part of the olfactory epithelium are removable to expose deep internal structure.

Size:15*20*30cm.



YA/R031A Enlarged Larynx Model

This model shows the anatomical structure of laryngeal cartilages, laryngeal muscles, and laryngeal cavity. Cricothyroid joint can make locomotion, simulating opening or closing glottis. Enlarged about 3 times.

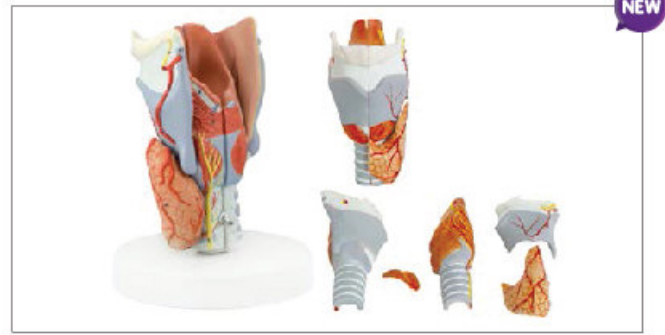
Size: 15*14*30cm



YA/R032 Enlarged Larynx Model 5 Parts

This item is two times life-size, and dissects into 5 different pieces. The parts are held together with small, hidden magnets and metal pegs. It is also numbered, outlining over 30 different, hand-painted anatomical details. The model is accompanied by a corresponding product manual. Students and patients can gain a better understanding of the different cartilage and muscle components of the human larynx with this model.

Size: 15*15*20.5cm



YA/R032A Mini Larynx Model 2 Parts

It is the same as YA/R032 but only with 2 parts and smaller.

Size: 11*11*14cm



YA/R033 Larynx with Tongue Model

Nature size with 5 parts: larynx 2, tongue 2 and lower jaw removable 1.

Size: 21*12*15cm



YA/R042A Left and Right Lungs Model

A realistic, two-part model of the human lungs with all external features. Life size. Mounted on base with stand.

Size: 30*20*30cm



YA/R043A Clear Model with Heart and Trachea Bronchial Tree

1. The model consists of heart, great vessels (aorta, superior vena caval), tracheobronchial tree and mediastinum.
2. 57 positions are displayed

Size: 2/3 time of Life size, 27cm x 22cm x 19cm
Material : Advanced PVC and paint



YA/R054 Mediastinum Model

This life-size model is composed of five parts, including a 2-part heart that provides an interior view of the chambers and valves. The sternum and thymus are removable to reveal the pericardial sac and the major pulmonary and systematic vessels. The trachea and esophagus are shown entering the mediastinum through the superior thoracic aperture; the inferior thoracic aperture is delimited from the diaphragm musculature. Mounted on base.

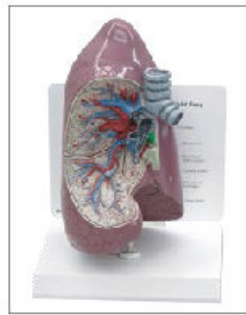
Size: 46*26*31cm



YA/R041 Lung Model 4 Parts

This model is a realistic representation of human lungs and external features.

Size:13*9.5*21cm.



YA/R044 Lung Model 1 Part

The model illustrates the structure of the right lung.



YA/R051 Segmental Bronchi Model

The model shows the bronchial tree from the bifurcation of the trachea through its subsequent subdivisions to the bronchopulmonary segments, displayed in different colors.

Size:15*22*26cm



YA/R043 Clear Lung Model

This model presents 10 segments in the right lung and 8 in the left. The distributions of the bronchial tree can be observed through the transparent lungs.

Size:28*15*38.5cm



YA/R042 Lung Segmental Model

The model shows clearly the segments anatomy of the left and the right lungs. The various lobes are painted with different colors to highlight their locations.

Size:30*20*30cm.



YA/R045 Diseased Lung Model



YA/R051A Diseased Bronchi Model

Size:15*14*3cm



YA/R052 Diseased Bronchi Model 4 Parts

Size:13*10*4cm



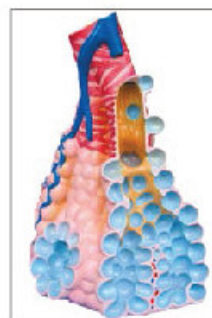
YA/R052A Diseased Tracheal Model 1 Part

Size:13*10*4cm



YA/R053 Trachea Section Model

This item is composed of 3 different models on the same base: the first one reproduces a 3X life size cross-section of the human trachea; it can be longitudinally divided into two parts to show the inner anatomy. The second model is an enlargement of the anterior trachea wall cross-section; it shows all the different layers, from the tracheal cartilage to the epithelium. The third one shows the magnified pseudostratified ciliated epithelium in great detail: it displays the typical ciliated cells and the mucous cells.



YA/R062 Enlarged Alveolus Model

The model shows the small branches of principal bronchus: 1. Section of bronchiole of no cartilage. 2. The relation between pulmonary alveoli and terminal bronchiole. 3. The structure of alveolar sac and alveolar duct. 4. The capillary rete in the alveolar septa.

Size:26x15x35CM



YA/R061 Enlarged Smoking Aleoulus Model

Size:24*15*17cm



YA/U011 Male Urogenital System

Demonstrate the external features of the urogenital system and the internal structures of the kidney, urinary bladder, penis and testicle.

Size:19*19*46cm.



YA/U011A Enlarged Male Urogenital System

The model represents the major components of the urinary system.

Size:52*37*20cm.



YA/U012 Female Urogenital System

This model shows kidney, ureters, urinary bladder, uterus, accessories of uterus, vagina, ovary membrane, ligaments, uterus ligament and its artery etc.

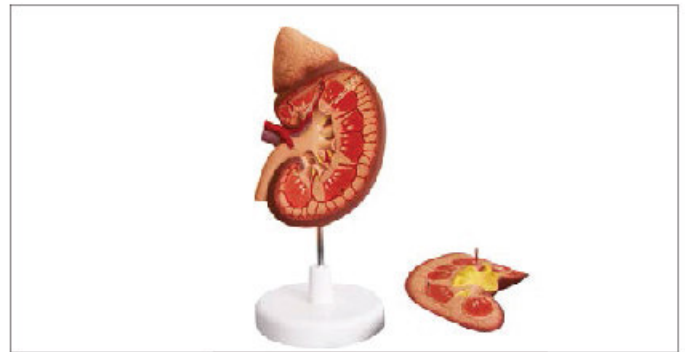
Size:19*18*45cm.



YA/U013 Urinary System Model

The model shows the structures of retroperitoneal cavity, pelvis with bones and muscles, inferior vena cava, aorta with its branches, upper urinary tract, kidney with adrenal gland, ureter, bladder, etc. Dissectible into 6 parts.

Size:41.5*33.5*12.5cm.



YA/U022 Enlarged Kidney with Adrenal Gland 2 Parts

This 2-part model shows the human kidney in frontal region. Internal structures are clearly revealed, including cortex, medulla, pyramids, calyces, renal pelvis, ureter and origins of the renal artery and vein. The front of the model is removable for inner examination.

Size:19*9*27cm.



YA/U022A Enlarged Kidney with Adrenal Gland 1 Part

The kidney is shown with the renal capsule. Additional structures include: the cortex, medulla, pyramids with papillae, partially dissected renal pelvis, renal calices, ureter, blood vessels, suprarenal gland with cortex and medulla. A schematic representation of the renal corpuscle with the system of collecting tubules is included.

Size:20*7*29cm.



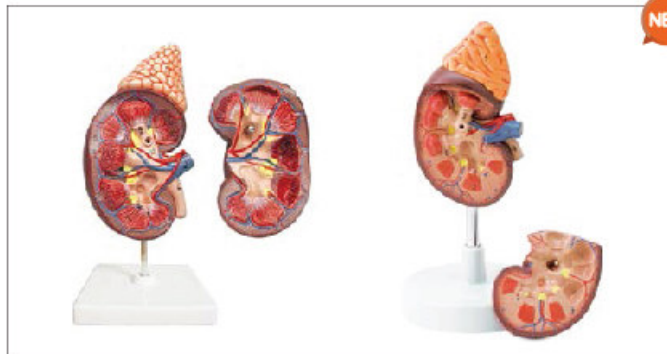
YA/U022B Kidney with Adrenal Gland 1 Part

16.5cm tall



YA/U022C Mini Kidney with Adrenal Gland

10.5cm tall



YA/U025 Kidney with Adrenal Gland Model (2 Part)
YA/U025A Kidney with Adrenal Gland Model (2 Part)

A life-size model of the kidney with the adrenal gland. The model is sectioned along the front plane; it can be divided in two parts to show internal structures, including the cortex, medulla, pyramids with papillae, partially open renal pelvis, ureter, and blood vessels. Mounted on base with stand.

Size: 11*11*15cm



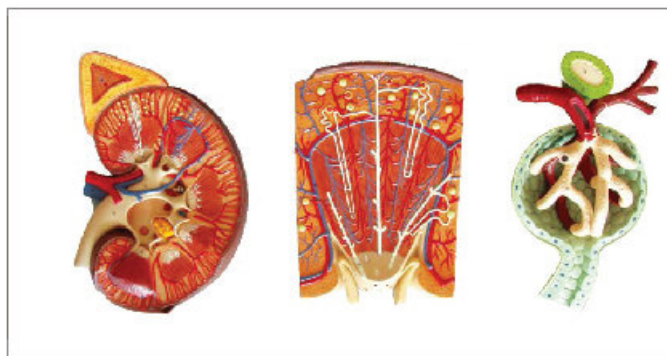
YA/U022D Kidney Model

14cm tall



YA/U023 Kidney and Cyst Model

14cm tall



YA/U026 Kidney Section with Renal Nephron and Renal Corpuscle

This 3 models set shows the basic structure of the kidney. We can find as a first model a frontal section of the kidney, enlarged 3 times, illustrates adrenal gland, cortex, medulla, pyramids with papillae, renal pelvis and blood vessels. The second model, representing a nephron enlarged 120 times, shows a renal tubules, a collecting tube system and Henle's loop. the third one illustrates Malpighian corpuscle with the Bowman's capsule, 700 times life size. All these models are a great instrument to understand the kidney anatomy in all the inner details.

Size:70*30*12cm.



YA/U024 Kidney and Renal Calculus Model

14.5cm tall



YA/U031A Female Pelvis and Bladder Coronal Section

Size:16*13*18cm



YA/U031 Male Bladder and Prostate Coronal Section

The model shows the complete anatomy of the prostate. The basal part of the urinary bladder is also shown and thanks to the longitudinal section, all the different lobes of the prostate can be easily identified.

Size:16*13*18cm.



YA/U033 Bladder and Prostate Enlarged

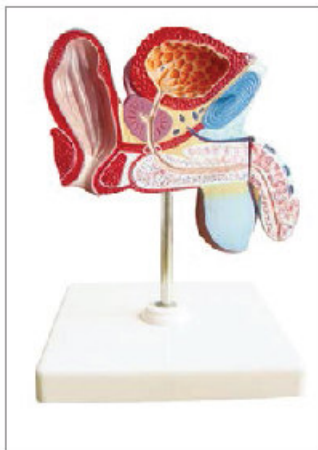
This model shows the male urinary bladder with the prostate gland surrounding the urethra. The model is dissected medially to expose both internal and external structures of the bladder and prostate, including the urethric and urethral orifices, ductus deferens, seminal gland, ejaculatory duct.

Size:17*13*13m.



YA/U034 Diseased Bladder and Prostate Model

Size:12*12*17cm



YA/U032 Male Bladder



YA/U032A Female Bladder



YA/U041A Female Genital Organ Model

It shows the entire female genital organs including uterus, uterus appendix (fallopian tube, ovary and its membrane, ligament teres uteri, ligament ovary proprium), vagina and the structure of external genital organ. Part of uterus and vagina are dissected to show its internal structures.

Size:17*13*10.5cm.



YA/U041 Male Genital Organ Model

This model shows, in natural size, all the organs of the male reproductive system. Penis, prostate and urinary bladder are longitudinally sectioned to reveal their inner anatomy; the testicle is partially cut away to expose all the internal structures. The model also includes a detailed cross- section, greatly enlarged, of the testicle: septula testis, rete testis, straight and contorted seminiferous tubules are shown with great accuracy.

Size:52*32*8cm



YA/U042 Enlarged Testis Model

This model shows the medial and sagittal section of the human testis including epididymis, ductus deferens, seminiferous tubules and rete testis .

Size:18*11*8cm.



◀ YA/U043A Uterus Model

1.5X life size model shows a dissected view of the vagine, cervix, uterus and ovary with follicles at various stages of development.
Size:17.5*15*22cm.



▲ YA/U044 Male Genital Organ 4 Parts

This life size model, composed of 4 parts, is dissected through the median sagittal plane to provide excellent views of external and internal structures. The removable parts include two halves of the penis, showing medial and transverse cuts and 2 halves of the male reproductive system with excellent detailing of internal structures.
Size:18*12*13cm.

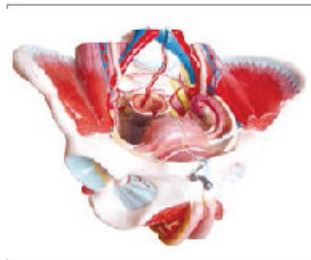


▲ YA/U044A Female Genital Organ 4 Parts

This life size model, composed of 4 parts, is a detailed representation of the female reproductive system as viewed through a median sagittal dissection. Removable parts include a 2-part uterus and 2 halves of the female reproductive apparatus with details of the internal structure.
Size:14.5*11.5*13.5cm.

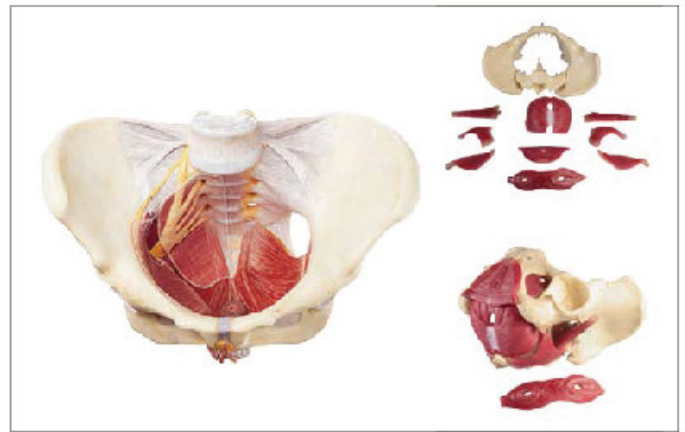


▲ YA/U051A Female Pelvis with Muscles



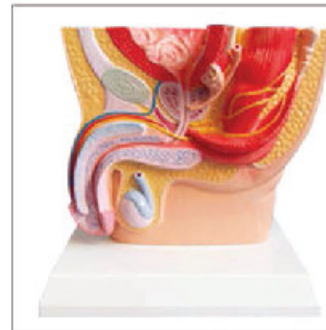
▲ YA/U052A Female Pelvis Model 4 Parts

Open Like a Book, Life-Size. Both halves of the pelvis and pelvic organs. Representation of internal and external sexual organs with Pelvic Muscles. Dissects into 4 parts.
Size, 28 × 23 × 17 cm.



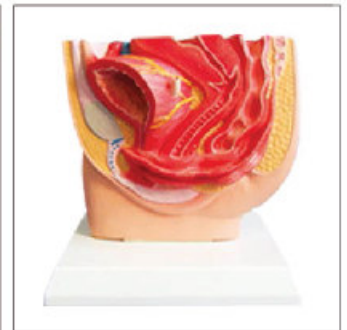
▲ YA/U051B Female Pelvis with Muscles and Nerves

This single-piece life-size model is a very useful tool to study the female pelvic anatomy and to understand the relationship between pelvic bones, muscles and female genital organs. It shows a complete skeleton of a female human pelvis associated with ligaments, muscles, internal and external female urogenital organs. Both the urinary bladder and the uterus can be opened along the longitudinal plane to show their inner anatomy. All the structures are reproduced with great detail and accuracy.
Size:24.5*18*21.5cm.



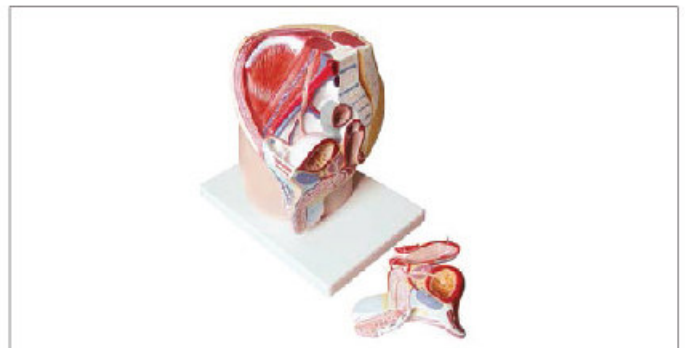
▲ YA/U053 Male Pelvis Cavity 1 Part

This model shows the normal position of male genital organs with bladder and rectum in the male pelvis.
Size:17*18*25cm



▲ YA/U053A Female Pelvis Cavity 1 Part

This model shows the normal position of female genital organs with bladder and rectum in the female pelvis.
Size:17*20*26cm



▲ YA/U054 Male Pelvis Cavity

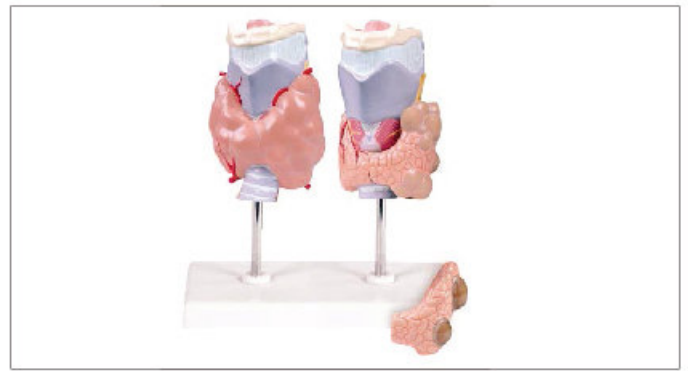
This life size model presents an open view through a median sagittal section of the pelvis. Internal structures of the male urogenital system are represented in fine detail. The removable parts include a half penis divided into medial and transverse sections, and half of the male reproductive system with an open dissection of a testis showing details of the internal structure.
Size:23*18*26cm.



YA/U054A Female Pelvis Cavity

This life size model, composed of 3 parts, shows an open dissection through the median sagittal section of the pelvis. Internal structures of the female urogenital system are portrayed in great detail. REMovable parts include half of the female reproductive system with the uterus opened to reveal medial and transverse sectional views.

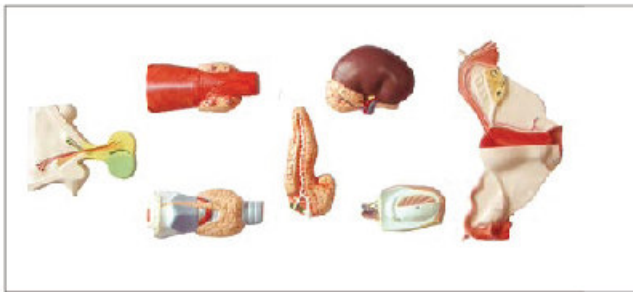
Size:23*21*25cm



YA/U063 Diseased Thyroid Model 4 Parts

This model set is composed by 2 thyroid models divided four ways. The first thyroid illustrates the Graves autoimmune disease, the most common cause of hyperthyroidism. The other model shows thyroid adenoma and carcinoma as compared to the normal right side of the thyroid.

Size:26.5*26.5*9cm.



YA/U061 Endocrine System Model

This model shows the external structure of the following human endocrine organs: pituitary gland, thyroid gland, adrenal gland, testis, pancreas, parathyroid gland, ovary.

Size:62*6*29cm.



YA/U062 Diseased Thyroid Model

Size:22.5*15.8*12cm.



YA/U071 Normal and Diseased Prostate Gland

This is an excellent educational tool for studying common prostate pathologies. The model consists of three prostate sections, including the rectum and urinary bladder. The first model shows the internal and external structures of a normal prostate. The second one illustrates benign prostatic hyperplasia, characterized by variable fibromuscular and epithelial predominance. The third model illustrates prostatic adenocarcinoma.

Size:18*13*16cm.



YA/U072A Enlarged Ovary Model

This 2-part model shows the anatomy of the human fallopian tube and ovary. The follicles are shown at different stages of maturation, from the primary ovarian follicle to the corpus albicans. A primary follicle is cross-sectioned, to illustrate the inner structure, the oocyte, zona pellucida and granulosa cells.

Size:22.5*16*16cm.



YA/U074 Spermatogenesis

The model shows the process of spermatogenesis from spermatid to the mature spermatozoon. Enlarged about 10000 times.

Size:50*4*38cm.



YA/U076B Mammary Gland in Lactation

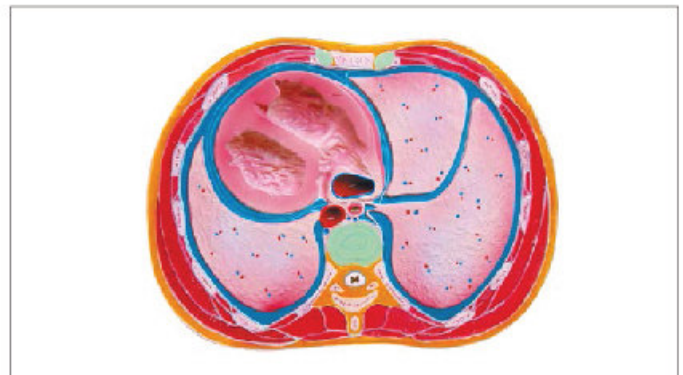
Size:18.5*13*13cm



YA/U075 Periodic Changes of Female Hormones and Internal Layer of Uterus

This model shows the relationship between female hormone levels and changes in the uterine lining throughout the menstrual cycle.

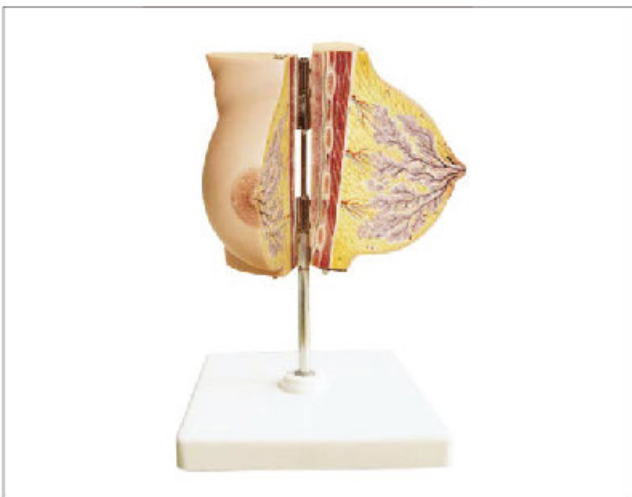
Size:50*3*38cm.



YA/U077 Schematic Cross Section Through Abdomen

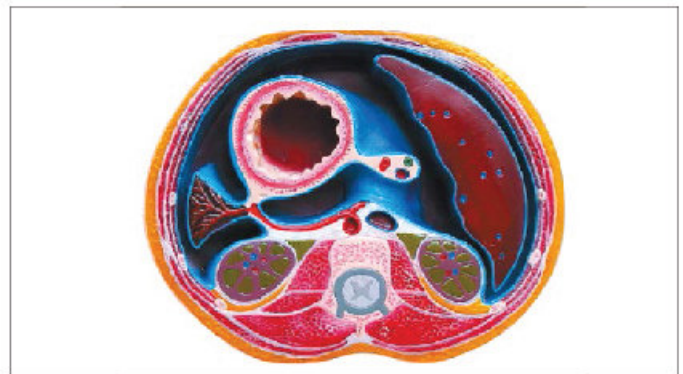
The model shows a typical cross sectional view through the abdomen at the level of the T12 vertebra. The stomach,liver,kidney,spleen and other abdomen structures are sectioned horizontally.

Size:31*21*4cm



YA/U076A Mammary Gland in Resting Period

Size:15*12.5*10.5cm



YA/U078 Schematic Cross Section Through Thorax

The model shows a cross sectional view through the thorax at the level of the T8 vertebra. In this model, it is possible to observe the horizontally sectioned heart,lungs, views, arteries and other thoracic structures.

Size:29*22.5*5cm.

Urinary System Model

NEW



YA/C011 Circulation System Model

The model represents a general view of the human circulation. It includes the heart, lungs, liver, spleen, kidneys and relevant connections with the pulmonary and systemic circulatory pathways.

Size:72*28*5cm



YA/C013 Human Blood Cells

Enlarged 2000 times, this model shows the various types of blood cells, including red blood cells, white blood cells (lymphocytes, monocytes, neutrophils, eosinophils and basophils) and blood platelets.

Size:53*38*5cm



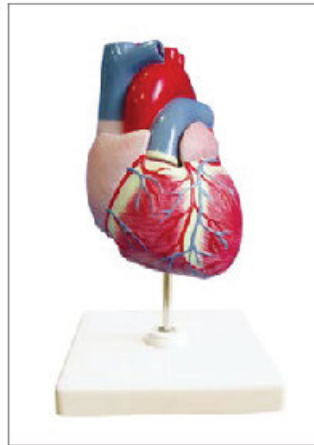
YA/C012 Heartbeat and Circulation Model

Size:42*22*70cm



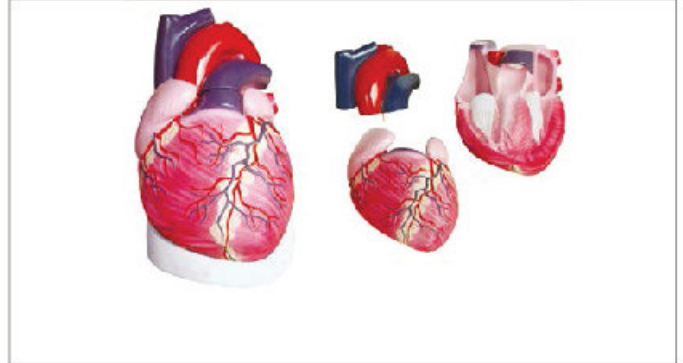
YA/C017 Thrombus Model

Size:18*14*12cm



YA/C022 Life Size Heart Model 2 Parts

Size:9*10*15cm



YA/C021 Enlarged Heart Model 3 Parts

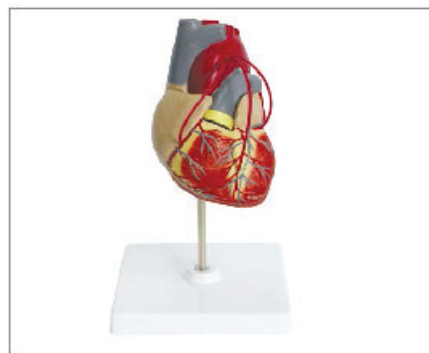
This model is sectioned along the anterior plane to show internal structures, including the cardiac valves and the comparative morphology of the right and left ventricles.

Size:20*20*28cm



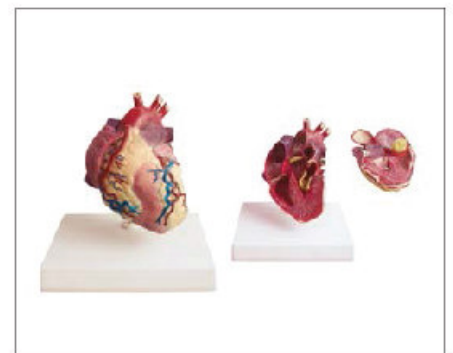
YA/C022A Life Size Heart Model 2 Parts

Size:8*10*10cm



YA/C024 Introductory Coronary Bypass

Size:9*10*10cm



YA/C025 Heart Hypertrophy Model

Size:9.5*12*11cm



NEW

YA/C027 Human Heart Model with thymus

This heart model is highly detailed, and comes in 2-parts, allowing students to see the internals of the heart.

Size:8.5*9.5*14.5cm



NEW

YA/C028 Mini Heart Model

Size: 8.5*9.5*14.5cm



YA/C029 Mini Heart Model

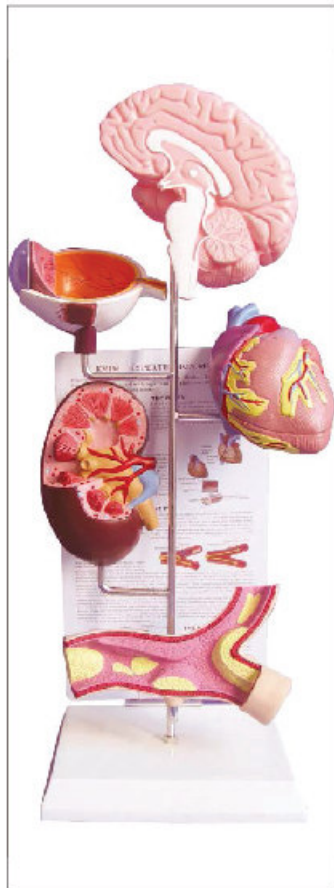
Size:8*9*10cm



YA/C031 Hypertension Model

This heart model is highly detailed, and comes in 2-parts, allowing students to see the internals of the heart.

Size:12*12*45cm



YA/C031A Hypertension Model

This heart model is highly detailed, and comes in 2-parts, allowing students to see the internals of the heart.

Size:20*14*50cm



YA/C032 Diabetes Model

Size:22.5*15.8*52cm



NEW

YA/C034A Lymphatic System Model

This 1-part relief model depicts the human lymphatic system with utmost accuracy. Lymphatic vessels, ducts, and lymph nodes are easily identified on this medical-quality model.

Size: 32*11*85cm

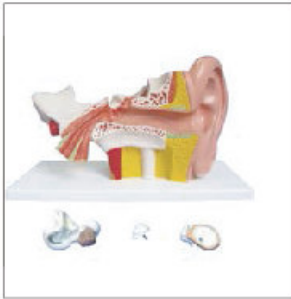
Circulation System Model



YA/S011 Enlarged Ear Model 6 Parts

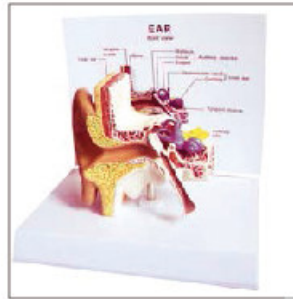
3 times enlarged. The model shows details of the external, middle and inner ear.

Size: 36*15*26cm



YA/S011B Enlarged Ear Model 4 Parts

3 times enlarged.
Size: 36*15*26cm



YA/S012A Enlarged Ear Model 1 Part

Size: 16.5*12.8*16cm



YA/S012 Enlarged Ear Model 4 Parts

1.5 times enlarged.

Size: 12*6*9cm



YA/S013 Life Size Ear Model

Life size.



YA/S014 Ear Ossicles

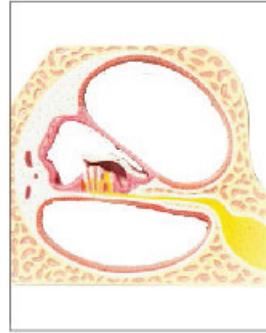
This model represents the malleus, incus and stapes, enlarged about 20 times.

Size: 21*15*21cm.



YA/S015 Labyrinth

Composed of 3 parts. It shows the saccule and utricle.
Size: 2*8*5.5cm



YA/S018 Cochlea and Corti's Organ

This single-piece model is a useful tool to study the mechanism of sound reception. The model shows an enlargement section of the cochlea and Corti's organ including hair cells, tectorial and basilar membrane.

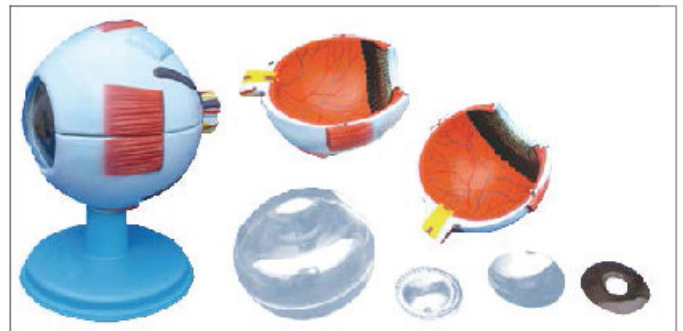
Size: 20*20*6cm.



YA/S019 Cochlear Duct and Organ of Corti

Composed of 3 parts. This model shows a three dimensional section of the cochlear duct, tectorial membrane, basilar membrane and vestibular membrane. The organ of Corti is well represented, including the cellular acoustic receptors that transform sound vibrations to electric signals.

Size: 20*18*18cm.



YA/S031 Eye Model 6 Parts

6X life size. The model can be dissected on the horizontal plane to show internal details. Cornea, iris, lens, and vitreous body can be removed. Muscular attachments on the sclera and part of the choroid are also shown.

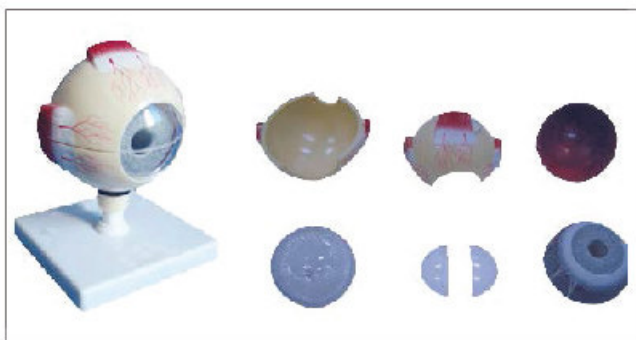
Size: 16*13*16cm



YA/S032 Eye Model 6 Parts

3 times enlarged.

Size: 13*10*10cm



YA/S033 Eye Model

3 times enlarged.

Size: 13*10*10cm



YA/S035 Eyeball Model

Size: 18*18*18cm



YA/S036 Diseased Cornea Model

Size: 16.5*12.8*16cm



YA/S034A Eye Model with Orbit

This 15-part model in about 6 times life size shows the anatomy of the human eye. Removable parts are the eyelid, the eye muscles, and the eyeball. The eyeball can be divided horizontally into two halves of sclera with retina and eye muscle attachments as well as vitreous humour, lens, cornea and iris. On base board.

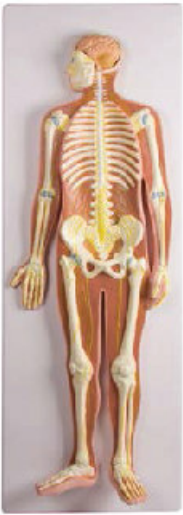
Size: 31*29*50 cm



YA/S037 Glaucoma Model

Size: 16.5*12.8*16cm

NEW



YA/N011 Nervous System Model

This 1/2 life-size relief model shows a general view of the peripheral and central human nervous system: the head is open to reveal the brain and the cerebellum; the pathway of the main nerves is well illustrated in relation to the skeleton.

Size:86*30*5cm.



YA/N013 Spinal Cord and Nerves

It shows the relationship between spinal cord and nerves.

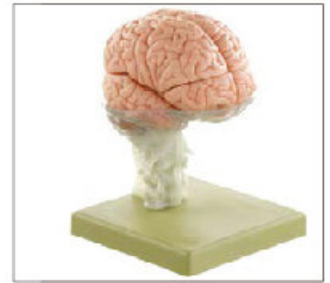
Size:13*16.5*23.5cm



YA/N022 Cerebellum

Human cerebellum is dissected to show details of internal organization.

Size:40*23*16.5cm



YA/N025 Functional Brain 15 Parts

Size:18*18*23cm



YA/N023 Thalamus

It shows various functional areas of the thalamus in distinct colors, thus providing a clear distinction between the different nuclei of each structure.

Size:27*20*13.5cm.



YA/N012 Neuron Model

It displays the structure of a typical neuron.

Size:36*15*20cm.



YA/N013B Spinal Cord Transection

It shows the structure of spinal cord.

Size:28*25*9cm.



YA/N026 Brain with Arteries

It shows cerebrum, cerebellum, brain stem and blood vessels.

Size:20*20*15cm.



YA/N021 Brain Stem

An important support for understanding the deeper anatomy of the brain.

Size:25*20*37cm.



YA/N026A Brain with Arteries and Fuctional Position

Size:20*20*15cm

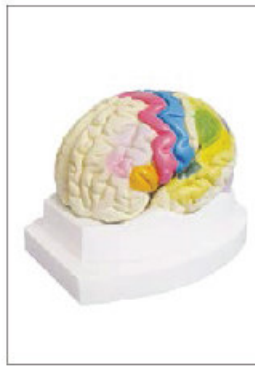
NEW



**YA/N026B
Leaf with Cerebrum**

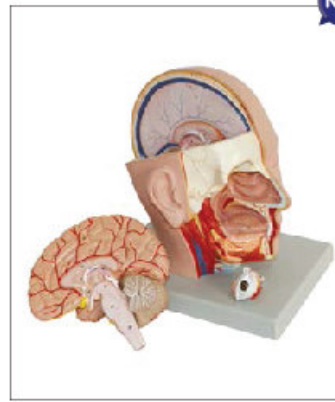
It is with distinct color for the different regions.

Size: 21.5*17*14cm



**YA/N026C Brain with
Fuctional Position**

Size: 21.5*17*14cm



**YA/N028 Head with
Brain 8 Parts**

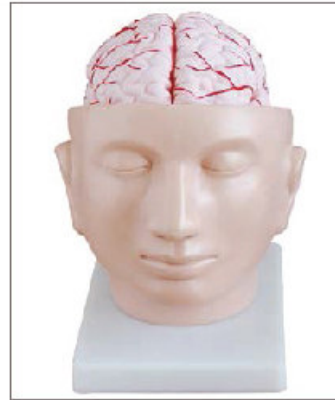
Life size head model is composed of 6 parts. The right side of the face is dissected in sagittal and horizontal section, showing many significant internal features of the skull and brain, as well as the entire oronasal cavity.

Size: 20*15*22cm.



YA/N026D Brain Mantle District

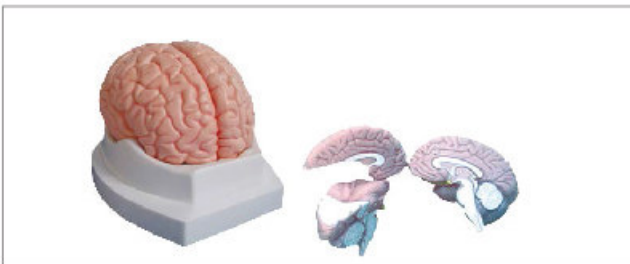
Size: 21.5*17*14cm



**YA/N028A Head with
Brain 9 Parts**

This model shows the brain structure inside the skull. Two halves brains can be disassembled into: frontal with parietal lobes, temporal with occipital lobes, half of brain stem, half of cerebellum.

Size: 20*15*22cm.



YA/N027 Brain Model

It shows the structure of the human brain.

Size: 21.5*17*14cm



**YA/N029
Diencephallon**

It shows the human diencephalon: all the main parts of thalamus, epithalamus, metathalamus and hypothalamus are represented in great detail.

Size: 24.5*13*24.5cm.



**YA/N030 Brainstem,
Cerebellum and Fourth
Ventricle**

This life-size model can be divided into three parts: Cerebellum and Brainstem, longitudinally sectioned, showing the insertions of the cranial nerves and the inner anatomy.

Size: 14*9.5*16cm.



YA/N031 Brainstem and Nuclei of The Hypothalamus

This 4-part model, 2X life-size, is a detailed representation of the human brainstem and hypothalamus. The brainstem is sectioned to show the hypothalamic nuclei; the thalamus is removable and divisible into two parts for inner examination. The insertions of the cranial nerves are easily recognizable on the surface of the brainstem.

Size: 14*11*22cm.





NEW

YA/H011 Half Head Life Size

Life size model shows the right half of the human head and neck, sectioned along the sagittal plane. A superficial dissection exposes the facial muscles, the superficial blood vessels and nerve branches of the face and scalp, the parotid and submandibular glands. A median dissection exposes the brain with its internal structure, the pharynx and upper respiratory tract, a section of the cervical vertebrae.

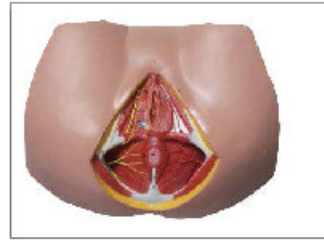
Size: 25*25*6cm



YA/H015 ENLARGED HAND MODEL

The model shows the anatomy of the hand, including muscles, nerves, ligaments, vessels and bone structure. Aponeurosis is removable for closer examination.

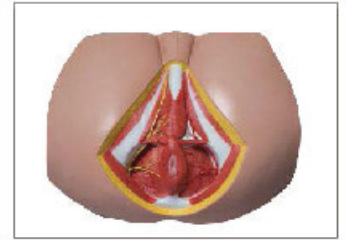
Size: 39*27*10cm



YA/H016 Male Perineum

This life size model shows the male perineal area, including the anus and external genitalia. The pelvic diaphragm, urogenital perineum and anal perineum are well represented, including distribution of blood vessels and nerve endings.

Size: 30*12*7.5cm



YA/H016A Female Perineum

This life size model shows the female perineal area, including the anus and the external genitalia. The pelvic diaphragm, urogenital perineum with opening of the vagina and the anal perineum are well represented. Distribution of blood vessels and nerve endings is included.

Size: 34*16.5*12cm



YA/H012 Head and Neck Musculature

This model shows the muscles of the head, neck and superior thoracic region. Superficial and deep musculature are well represented, as are the pathways of the subclavian and carotid arteries.

Size: 38*25*45cm



YA/H018 Nerves of Neck Region

This life size model shows the distribution of superficial plexuses of the cervical plexus.

Size: 40*26.5*11.2cm



YA/H019 Anatomy of the Neck

This life size model is a ventral view of the human neck, showing excellent details of the main muscles, vascular structures, nerves and glands.

Size: 33*23*11.5cm



NEW

YA/H013 Cranial and Autonomic Nerves

2.5X life size. Dissection of human half head shows the 12 cranial nerves with collateral branches and autonomic nerves. Median section reveals the upper respiratory tract and pharynx. The eyeball is removable for close examination.

Size: 42*15*40cm



YA/H014 Mediastinum

The sternum and thymus are removable to reveal the pericardial sac and the major pulmonary and systematic vessels. The trachea and esophagus are shown entering the mediastinum through the superior thoracic aperture; the inferior thoracic aperture is delimited from the diaphragm musculature.

Size: 27*22*31cm



NEW

YA/H015B Hand Anatomy Structure Model

This life size model of a human hand shows the anatomy in detail. It represents all important structures like muscles, tendons, ligaments, bones and nerves. The model is not dissectible and can be removed from the stand.

Size: 14*24*4 cm



NEW

YA/H023 Frontal and Median Section of Head

Life size representation of the superficial and the internal structures of the head and neck. Comparison between frontal and median sections provides a superior understanding of the anatomical structures of the head and neck. Mounted on board.

Size: 53*38*6cm



NEW

YA/H020 Cranial and Autonomic Nerves 2 Parts

2.5X life size. Dissection of human half head shows the 12 cranial nerves with collateral branches and autonomic nerves. Median section reveals the upper respiratory tract and pharynx. The eyeball is removable for close examination.

Size: 42.5*15*40cm



YA/H013A Mouth, Nose, Pharynx and Larynx with Vessels and Nerves

The model shows the interior parts of the cavity of mouth and pharynx with network of vessels and trigeminal nerve.

Size: 18*14*6cm



YA/H015A Hand Anatomy Model 4 Parts

This life-size muscled anatomy model is composed of 4 parts. The palmar aponeurosis and the palmaris brevis can be removed to reveal the underlying network of muscles, tendons, vessels and nerves. A deeper palmar dissection allows observation of the palmaris longus tendon, the palmar carpal ligament and the median nerve. Muscles can be removed to expose the superficial palmar branch of the radial artery. A superficial dorsal dissection shows ligaments, nerves and vessels.

Size: Nature size



NEW

YA/H022 Head with Pharynx Muscles

This life size head model is dissociated along the sagittal plane into 2 halves. Details of the oronasal cavity and larynx as well as musculature of the pharynx are exceptionally well represented.

Size: 15*15*30cm

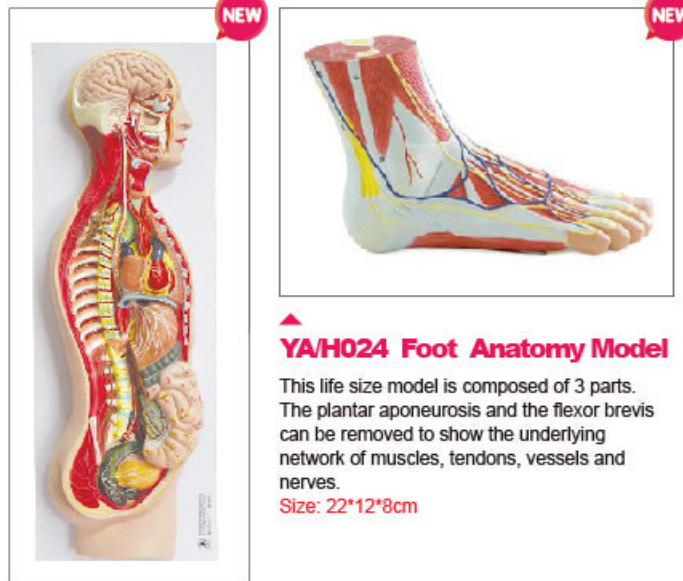


NEW

YA/H021 Thoracic Cavity Model

Separated into 17 parts and mounted on a base.

Size: 43*25*20cm



NEW

NEW

YA/H024 Foot Anatomy Model

This life size model is composed of 3 parts. The plantar aponeurosis and the flexor brevis can be removed to show the underlying network of muscles, tendons, vessels and nerves.

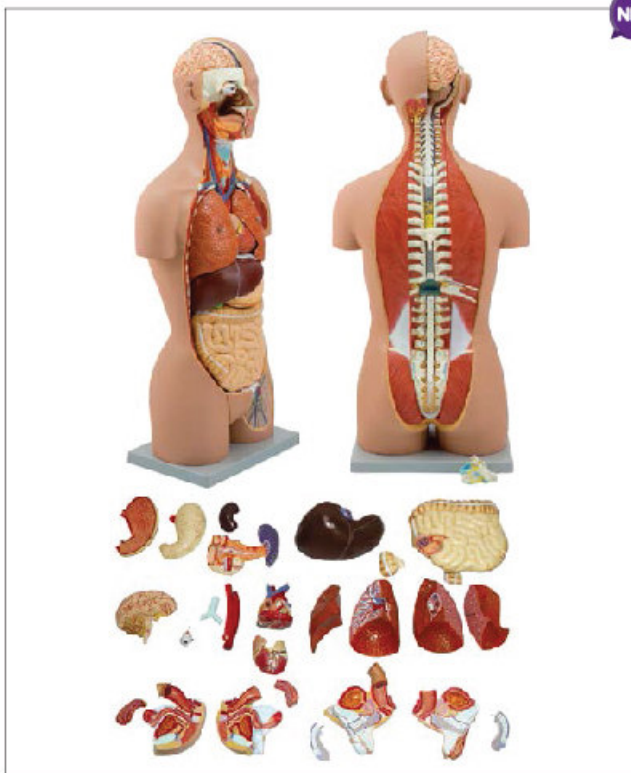
Size: 22*12*8cm

YA/H025 Sympathetic Nervous System Model

Relief presentation of the right side of the body in particular the thoracic part, the cardiac plexus, and the pelvic plexus. Model in one piece.

Size: 67*20.5*75cm

NEW



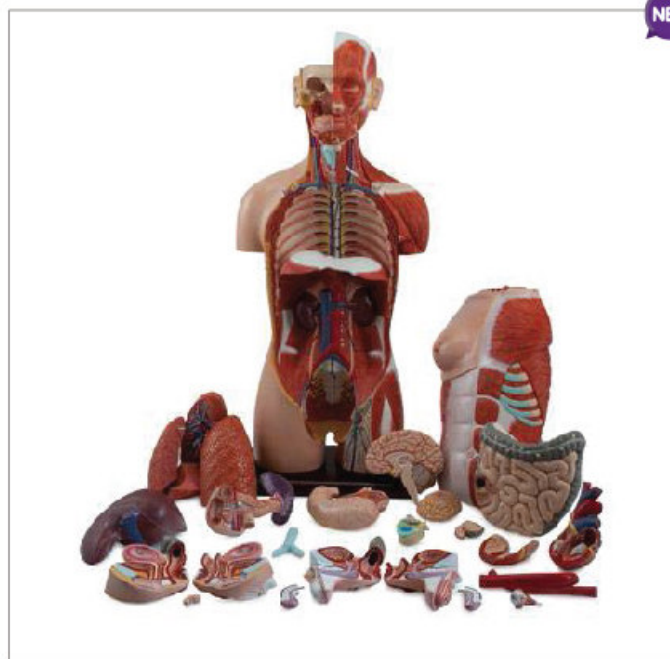
▲ YA/T011 85CM Dual Sex Human Torso 27 Parts

A complete life size torso with open back is composed of 27 parts and provides an exceptionally realistic reproduction of anatomical structures in their finest detail. All of the body systems are represented with full accessibility. This model is without question a valuable addition to any biology or anatomy course. The open back exposes muscular layers as well as the vertebral column and associated nerve branches. A thoracic vertebra, including a section of spinal cord, is removable for close examination of its anatomical details. The head is open and the brain is fully exposed on one side. The neck is dissected to expose muscular, neural, vascular and glandular structures. Significant structures are numbered and referenced on the accompanying key. The dissectible male and female urogenital systems are interchangeable.

Removable structures include the following:

- eye with optic nerve and extraocular muscles
- half of the brain, divided along the longitudinal fissure, showing internal structures and blood vessels
- trachea
- descending thoracic aorta and esophagus
- right and left lungs (2 parts each), showing the bronchial tree and vasculature
- liver with gallbladder
- half of one kidney sectioned along the frontal plane, showing the internal structure and vessels
- 2-part heart with clear depiction of atria, ventricle, valves and section of heart wall
- stomach dissected in 2 parts
- pancreas, duodenum and spleen with vessels and ducts
- small and large intestines with removable cover portion of caecum
- male and female urogenital system (4 parts each) sectioned medially with excellent views of internal structures
- thoracic vertebra (T12) with spinal cord.

NEW



▲ YA/T014 85CM Dual Sex Human Muscled Torso Model 28 Parts

This life with open back is composed of 28 parts and provides an exceptionally realistic reproduction of anatomical structures in their finest detail. All of the body system are represented with fully accessibility.

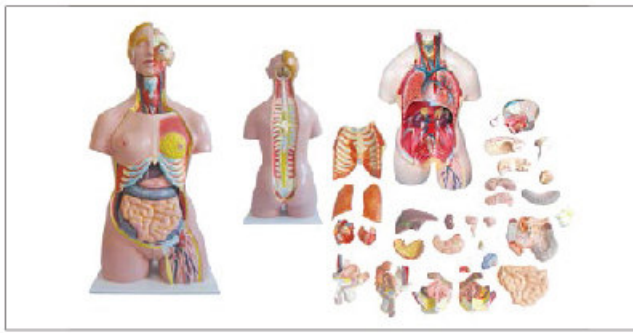
The left side exposes all significant superficial and deeper muscles with vessels and bones.

The open back shows muscular layers as well as the vertebral column and associated nerve branches.

A thoracic vertebra, including a section of spinal cord, is removable for close examination of its anatomical details. The head is open and the brain is fully exposed on one side. The neck is dissected to expose muscular, neural, vascular and glandular structures. Significant features are numbered and referenced on the accompanying key card. The dissectible male and female urogenital systems are interchangeable.

Removable structures include the following:

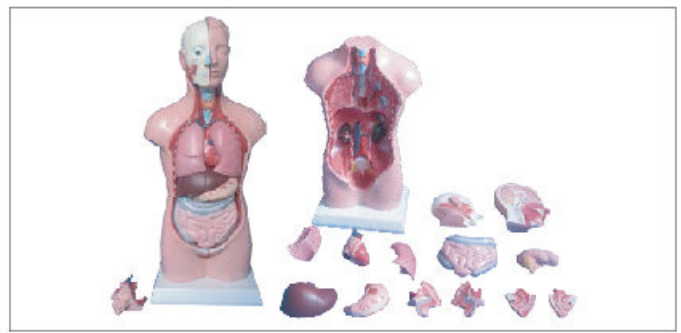
- eye with optic nerve and extraocular muscles
- half of the brain, divided along the longitudinal fissure, showing internal structures and blood vessels
- trachea
- descending thoracic aorta and esophagus
- right and left lungs (2 parts each), showing the bronchial tree and vasculature
- chest cover
- mammary gland
- liver with gallbladder
- half of one kidney sectioned along the frontal plane, showing the internal structure and vessels
- 2-part heart with clear depiction of atria, ventricle, valves and section of heart wall
- stomach dissected in 2 parts
- pancreas, duodenum and spleen with vessels and ducts
- small and large intestines with removable cover portion of caecum
- male urogenital system (4 parts)
- female urogenital system (3 parts) including embryo
- thoracic vertebra (T12) with spinal cord.
- Size: 90*40*27.5cm



▲
**YA/T013 85CM Dual Sex Human Torso Model
32 Parts**

Includes: Torso, brain 8 parts, eyeball, thoracic wall and mammary, half lung 2 parts, heart 2 parts, stomach 2 parts, liver, half kidney, colon 4 parts, small intestine, vertebra, embryo, male genital organ 4 parts and female genital organ 3 parts.

Size: 37*23*86cm



▲
**YA/T022 42CM Dual Sex Human Torso Model
13Parts**

Includes: torso, head 2 parts, lung 2 parts, heart, stomach, liver, kidney, pancreas and spleen, intestine, male genitalia 2 parts female genitalia 2 parts.

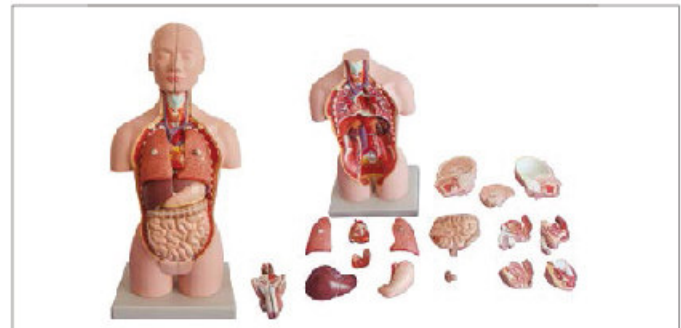
Size: 24*18*42cm



▲
**YA/T021 42CM Dual Sex Human Torso Model 20
Parts**

Includes: torso, head 2 parts, brain, lung 2 parts, heart 2 parts, stomach 2 parts, liver, kidney, pancreas and spleen 3 parts, intestine, male genitalia 2 parts female genitalia 2 parts.

Size: 24*18*42cm



▲
**YA/T023 42CM Dual Sex Human Torso Model
16 parts**

This half life size torso is an excellent tool in basic anatomy teaching.

Composed of 16 parts, as follows:

- head (2 parts) showing a section of the brain and the upper respiratory tract
- half of the brain, showing internal structures
- 2 lungs
- heart (2 parts) showing the atria, ventricles and valves
- liver with gallbladder
- stomach
- single piece, including small intestine, large intestine and pancreas
- removable cover that expose interior of caecum
- male reproductive organs (2 parts)
- female reproductive organs (2 parts).



▲
**YA/T031 26CM Sexless Human Torso Model
15 Parts**

This most popular educational torso features 15 parts, including torso, brain (2 parts), cut calvarium, trachea & esophagus & aorta, heart, lung (4 parts), stomach, diaphragm, liver, pancreas and spleen, intestine.

Size: 26cm



YA/M011 Human Body Horizontal Layer

Size:42*20*60cm



YA/M012 Human Body Sagittal Layer

Size:42*20*60cm



YA/M013 Head Disc 17pcs

This life-size head model is sliced horizontally into 17 pieces, giving an idea of how computer tomography and magnetic resonance work. Each slice can be rotated and removed for closer examination of its anatomical detail, which is reproduced with great accuracy.

Size:19*17.5*24.5cm



▲
YA/HB011 Skin Model 4 Parts

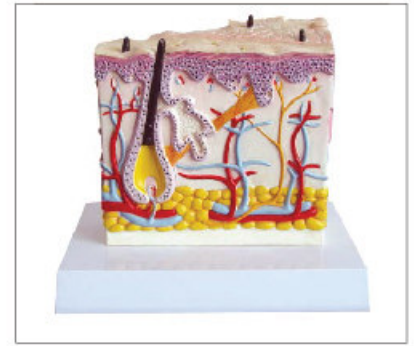
Size:14*10*12cm



▲
YA/HB012 Skin Model 1part

The model shows the structure of the human skin. All the skin layers can be easily identified and the main structures, such as hair follicle, sensitive corpuscles, sebaceous and sweat glands.

Size:20*15*15.5cm



▲
YA/HB013 Psoriasis Skin Model

Size:16.5*12.8*14cm



▲
YA/HB014 Skin Model 2 Parts

Size: 16.5*12.8*12cm



▲
YA/HB015 Dermatitis Model

Size:18*14*16cm



▲
YA/HB016 Skin Section Model

Size:30*15*30cm



▲
YA/HB052 Embryonic Development

This model, composed of 9 life-size pieces, illustrates human foetal development from the 4th week to the 6th month. All the main structures of the uterus and foetus are well represented and identified. Two models of the set show the different position of twins.



▲
YA/HB053 Embryo

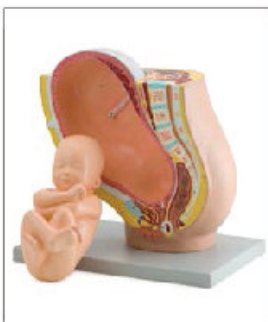
The model shows structural details of a human embryo at 4 weeks of development.

Size:27*19*14cm



▲
YA/HB054 Placenta Model

Size:20.5*20.5*11cm



▲
YA/HB051 Pregnancy Pelvis with Mature Fetus

This life size model depicts the female human pelvis in median section with a fetus in the 40th week of pregnancy. The fetus is in the normal position prior to birth, showing the anatomical relationship between various structures of the maternal pelvis and the fetus. Fetus is detachable for closer examination. Size:40*26*38cm



YA/HB055 Enlarged Model of Placenta

Size:20.5*20.5*28cm



YA/HB101A Artery and Vein Model

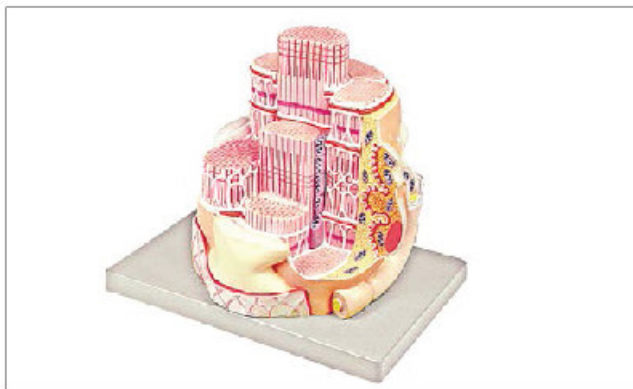
Size:50*32*22cm



YA/HB131 Tongue and Tongue Tissue

This item shows the anatomy of the life-size tongue, including the palatin and lingual tonsils, epiglottis and muscles. The model also includes a detailed 20X life-size enlargement of the tongue tissue to show its histology: taste buds, lingual and mucous glands, crypt and muscles are well represented.

Size:40*30*15cm



YA/HB121 Skeletal Muscle Ultrastructure Model

This model, enlarged approximately 40000X, shows the structure of skeletal muscle fibres, including the anatomical features of sarcomeres with sarcoplasmic reticulum, myosin and actin myofibrils and the neuromuscular plate.

Size:33*22.5*30cm



YA/HB132 Virus Model

Includes: acquired immunodeficiency syndrome virus model, rhabdovirus model, bacterial virus model and adenovirus model



YA/HB101 Artery and Vein Structure Model

An important support for understanding the difference between artery and vein histology. In this single-piece model one artery and two veins are represented in great detail. One vein is longitudinally sectioned to show the closed and open venous valves; the artery and the right vein are cross-sectioned so the different layers, such as tunica media, elastic membrane and tunica adventitia, can be easily recognized. 20X life size.

Size:32*20*32cm



YA/HB133 Cell Mitosis Model 8 Parts

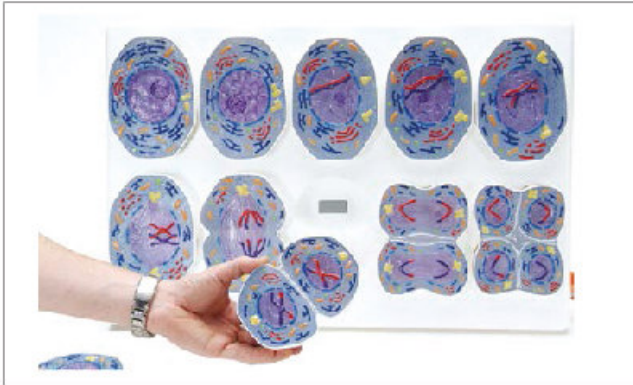


▲ YA/HB133A Cell Mitosis Model 9 Parts



▲ YA/HB135 Congenital Heart Defect Model

Includes 5 hearts. Size: 10*11.5*16cm each model



▲ YA/HB134 Cell Meiosis Model 10 Parts



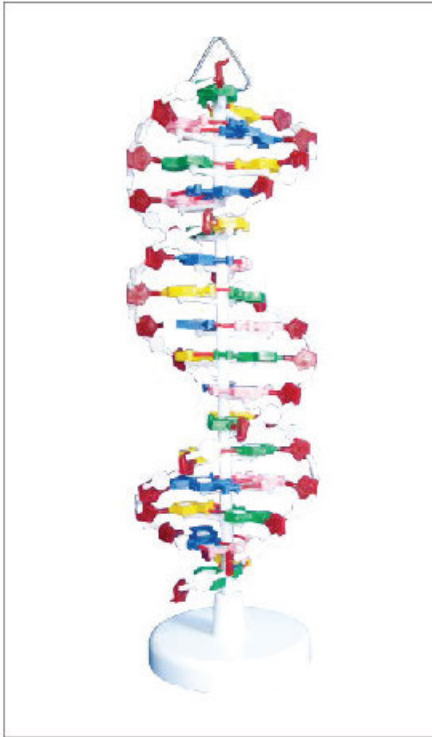
▲ YA/HB501 Common ophthalmopathy Model

There are 20 kinds of eye diseases to be shown.



▲ YA/HB502 Coated Tongue Model

There are 30 kinds of tongue to show.



▲ YA/HB136 DNA Model



▲ YA/HB056 Fetal Circulation and placenta Model

Fetal size: 51*33*20cm, Placenta size: 21*21*15cm



YA/S037 Glaucoma Model



YA/HB013 Psoriasis Skin Model



YA/HB015 Dermatitis Model



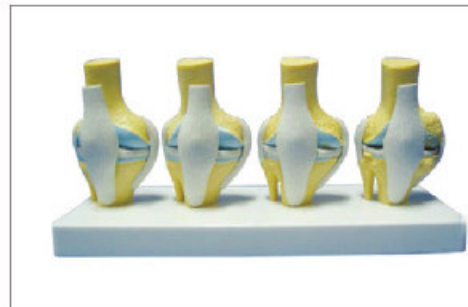
YA/P011 Extruded Disk Model



YA/P014 Diseased Vertebrae Model



YA/P015 Pathological Knee Joint Model



YA/P015A Pathological Knee Joint Model



YA/P015B Knee Joint



YA/P015C Rheumatic Knee Joint



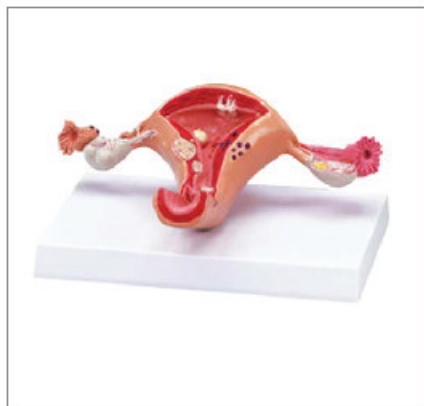
YA/P015D Rheumatic Knee Joint



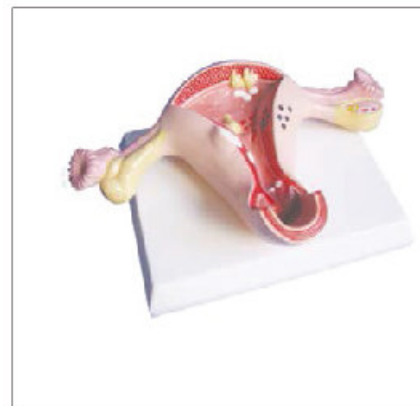
YA/P015E Knee Joint with Ligaments



YA/P015F Knee Joint with Muscles and Ligaments



YA/P016 Diseased Uterus Model



YA/P017 Diseased Uterus Model



YA/P018 Diseased Uterus Model



YA/P019 Normal Uterus Model



YA/P020 Elbow Joint



YA/P020A Elbow Joint



YA/P020B Elbow Joint



YA/P021 Shoulder Joint



YA/P021A Shoulder Joint with Muscles and Ligaments



YA/P021B Shoulder Joint



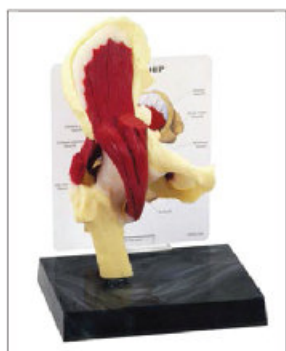
YA/P021C Shoulder Joint



YA/P021D Shoulder Joint with Ligaments



YA/P022 Hip Joint with Ligaments



YA/P022A Hip Joint with Muscles and Ligaments



YA/P022B Thigh Bone Model



YA/P023 Foot Bone



YA/P023A Foot Bone



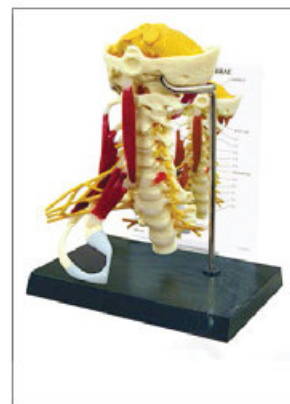
YA/P024 Hand Bone



YA/P025 Multi-functional Vertebrae Model



YA/P025A Multi-functional Vertebrae Model



YA/P026 Senior Cervical Vertebrae with Muscles



YA/P024A Diseased Hand Model



YA/P024B Dissected Mini Hand Model



YA/P027 Lumbar Nerves Model



YA/P028 Lumbar, Sacrum with Nerves



YA/P027A Lumbar Nerves Model



YA/P028A Lumbar, Sacrum Model



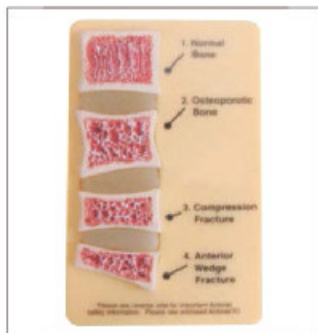
YA/P029 Pathological Spondyle Model



YA/P029A Spondyle Model



YA/P029B Pathological Spondyle Model



YA/P029C Pathological Spondyle Model



YA/P030 Pathological Thigh Bone Model



YA/P031 Diseased Acne Model



▲ **YA/P032 Pathological Bronchopulmonary Model**



▲ **YA/P032A Dissected Kidney Model**



▲ **YA/P033 Sutured Skin Model**



▲ **YA/P034 Cutaneum Carcinoma Model**



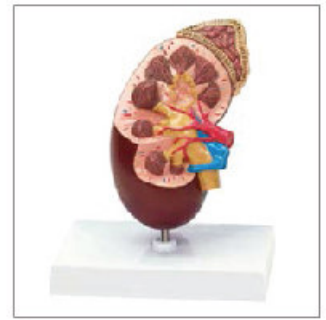
▲ **YA/P035 Coryza Model**



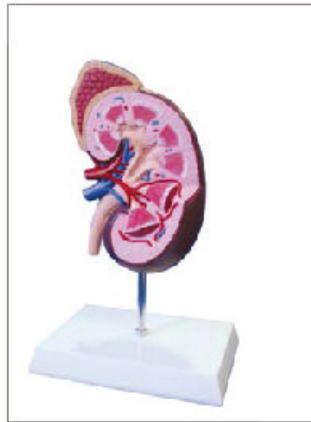
▲ **YA/P035A Nasal Cavity Model**



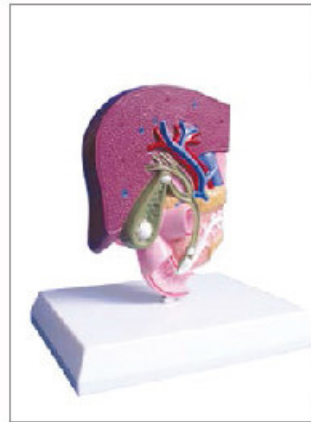
▲ **YA/P036 Pathological Oesophagus Model**



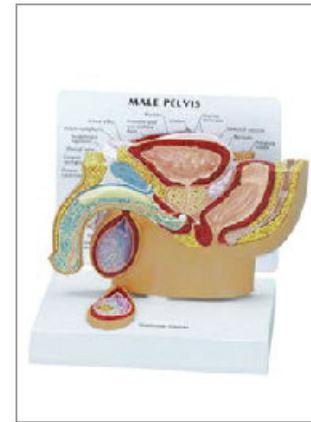
▲ **YA/P037 Kidney Model**



▲ **YA/P037A Kidney Model**



▲ **YA/P038 Cholecystitis Calculus Model**



▲ **YA/P039 Male Pelvic Cavity**



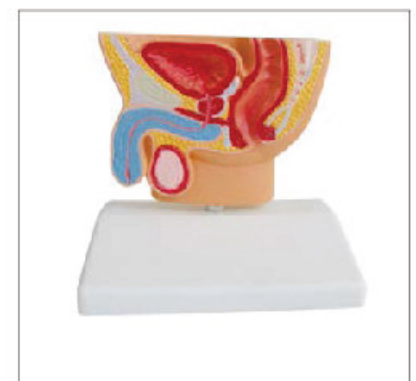
▲ **YA/P039C Male Pelvic Cavity**



▲ **YA/P039A Male Pelvic Cavity**



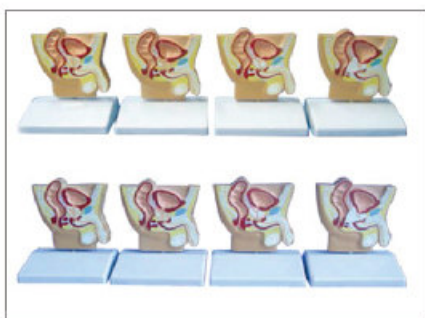
▲ **YA/P039B Male Pelvic Cavity**



▲ **YA/P039D Male Pelvic Cavity**



YA/P039E Pathological Double Face Male Prostate Model



YA/P039F Pathological Prostate Model



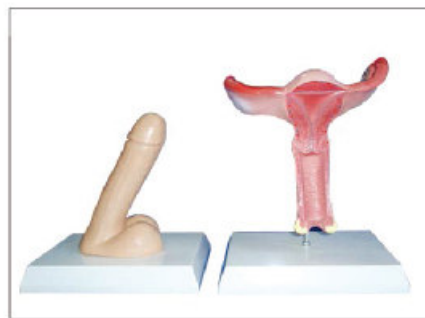
YA/P039G Pathological Prostate Model



YA/P040 Female Pelvic Cavity



YA/P040A Female Pelvic Cavity



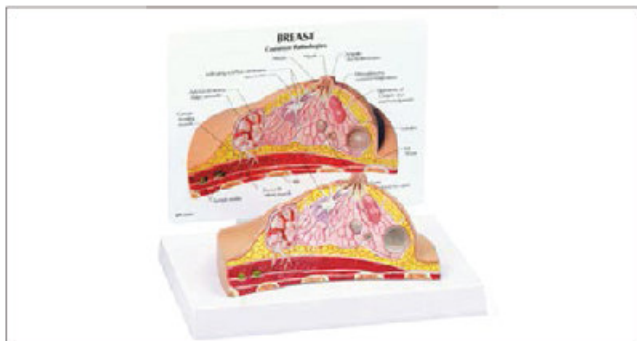
YA/P041 Male, Female Genital Organs



YA/P042A Breast Examination Model



YA/P042B Breast Examination Model



YA/P042 Pathological Breast Model



YA/P042C Breast Examination Model